



CUSTOM PROJECT WORKBOOK

# CUSTOM PROJECT

02

ALL  
MOUNTAIN

10

SUMMER  
JERSEY

16

SUMMER  
BIBS

20

SUMMER  
BODIES

24

PROTECTIONS

30

WINTER  
JACKETS

34

WINTER  
JERSEYS

36

WINTER  
BIBS

40

KIDS

46

AFTER RACE

48

BASE LAYERS

50

ACCESSORIES



**PRO**  
ALL MOUNTAIN JERSEY  
SHORT SLEEVES

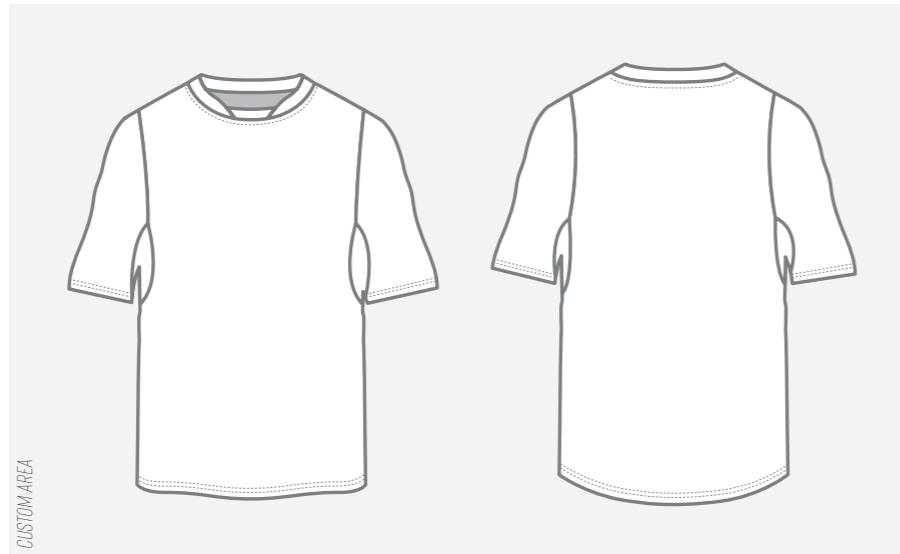


**PRO**  
ALL MOUNTAIN JERSEY  
LONG SLEEVES



SIZE 3XS-4XL

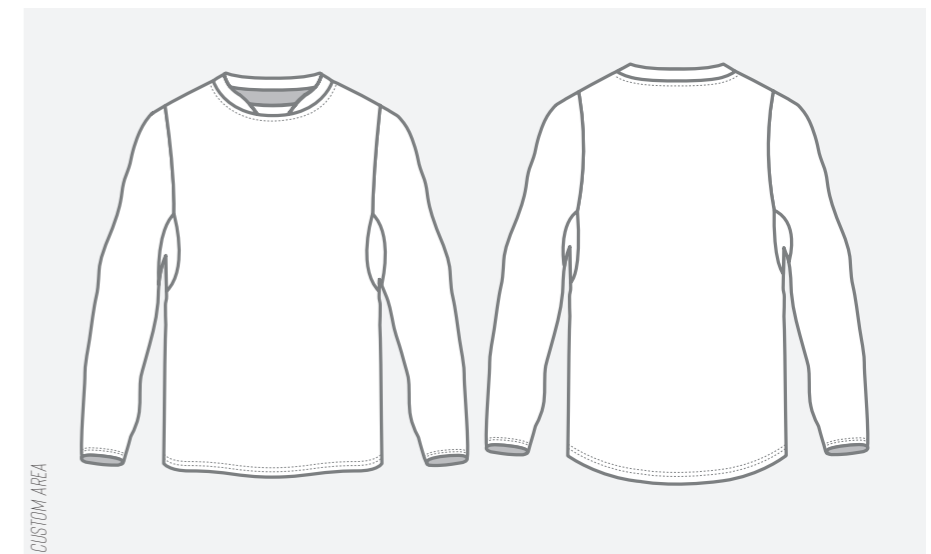
**FRONT FABRIC:** LIGHTWEIGHT ELASTIC FABRIC  
**BACK AND SLEEVES FABRIC:** ELASTIC MESH  
**TECH:** ERGONOMIC COLLAR, ELASTIC BODY AND ARM FOR A BETTER PROTECTIONS FITTING SLIM FIT



PRO ALL MOUNTAIN JERSEY SS 88201019

SIZE 3XS-4XL

**FRONT FABRIC:** LIGHTWEIGHT ELASTIC FABRIC  
**BACK AND SLEEVES FABRIC:** ELASTIC MESH  
**TECH:** ERGONOMIC COLLAR, ELASTIC BODY AND ARM FOR A BETTER PROTECTIONS FITTING SLIM FIT



PRO ALL MOUNTAIN JERSEY LS 88201018

**PERFORMANCE**  
ALL MOUNTAIN JERSEY  
SHORT SLEEVES

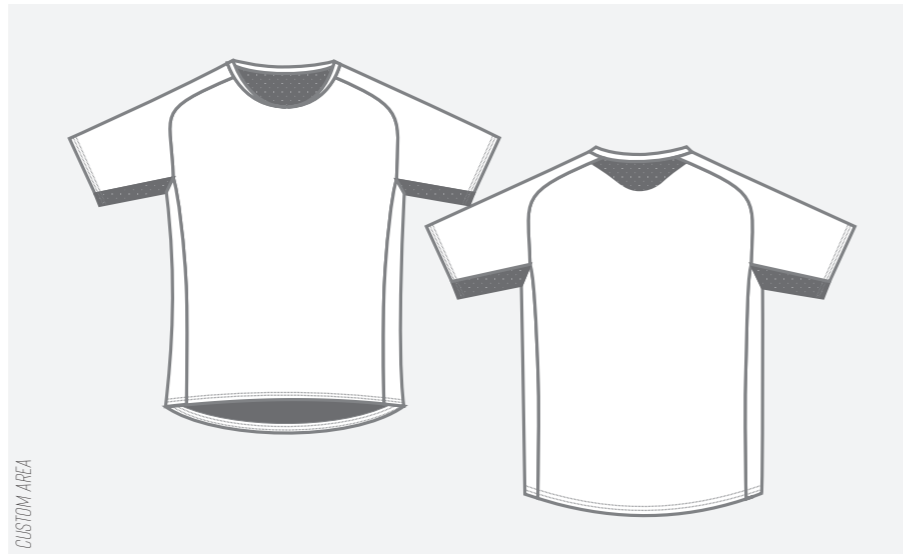


SIZE 3XS-4XL

**FRONT FABRIC:** FAST-DRYING 95 G MICROFIBER SUPPLE AND BREATHABLE

**INSERTS:** ELASTIC MESH

**TECH:** RAGLAN CUT SLEEVE WITH MESH INSERT ON ARMPIT FOR EXCELLENT MOISTURE MANAGEMENT, MESH INSERT ON THE BACK NECK FOR AIRFLOW SYSTEM CONTROL  
REGULAR FIT



PERF ALL MOUNTAIN JERSEY SS

88191044

**PERFORMANCE**  
ALL MOUNTAIN JERSEY  
LONG SLEEVES

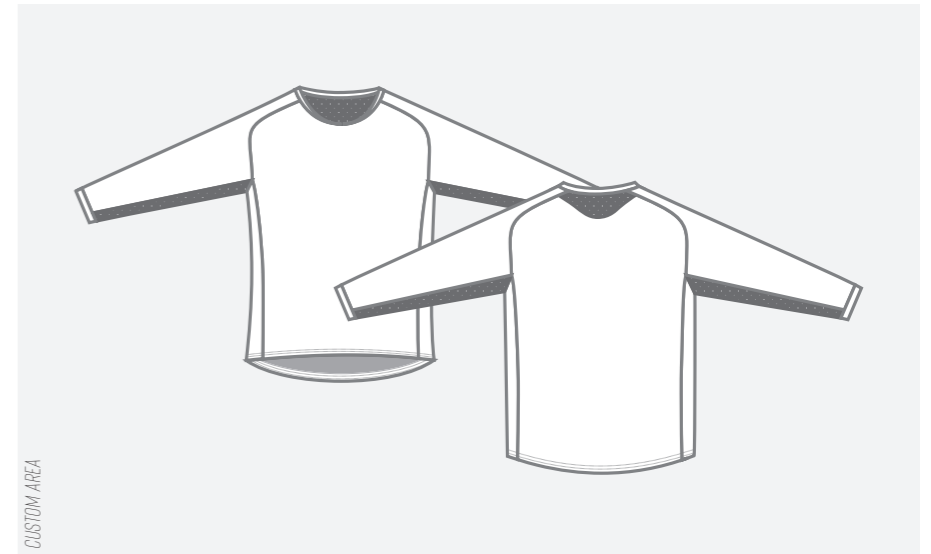


SIZE 3XS-4XL

**FRONT FABRIC:** FAST-DRYING 95 G MICROFIBER SUPPLE AND BREATHABLE

**INSERTS:** ELASTIC MESH

**TECH:** RAGLAN CUT SLEEVE WITH MESH INSERT ON ARMPIT FOR EXCELLENT MOISTURE MANAGEMENT, MESH INSERT ON THE BACK NECK FOR AIRFLOW SYSTEM CONTROL  
REGULAR FIT



PERF ALL MOUNTAIN JERSEY LS

88191043



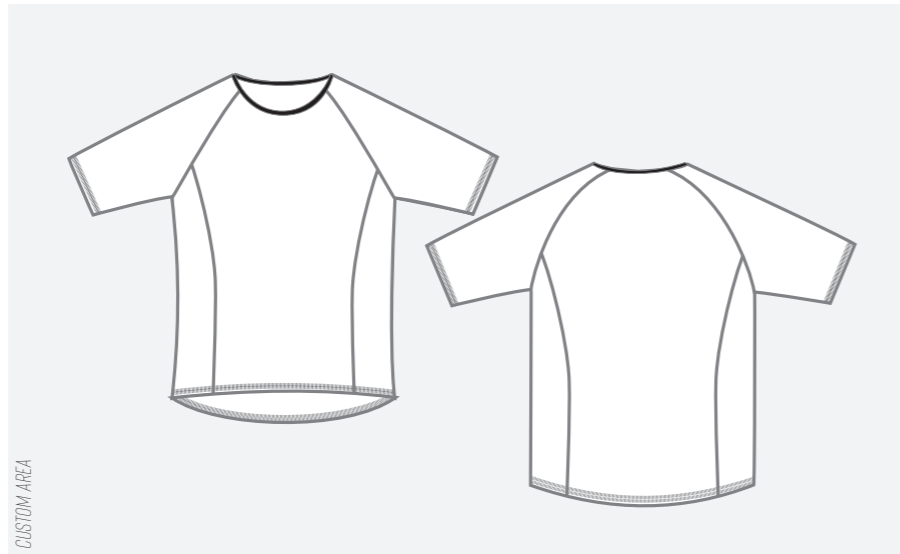
**SPORT**  
ALL MOUNTAIN JERSEY  
SHORT SLEEVES



SIZE 3XS-4XL

**MAIN FABRIC:** BRAETHABLE MESH FULL PRINTABLE

**TECH:** WIDE NECK WITH A PIPE FINISCING  
LOOSE FITT



SPORT ALL MOUNTAIN JERSEY SS

88141058

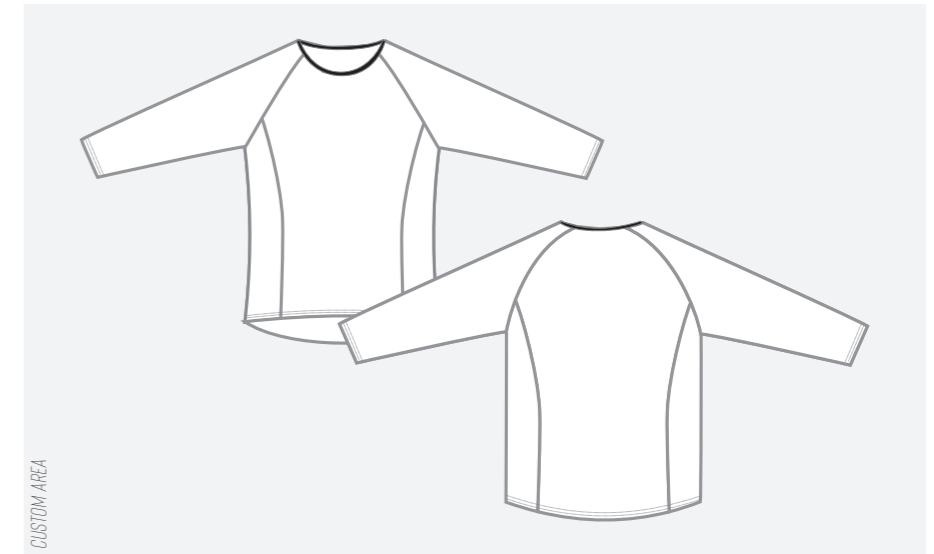
**SPORT**  
ALL MOUNTAIN JERSEY  
LONG SLEEVES



SIZE 3XS-4XL

**MAIN FABRIC:** BRAETHABLE MESH FULL PRINTABLE

**TECH:** WIDE NECK WITH A PIPE FINISCING  
LOOSE FITT



SPORT ALL MOUNTAIN JERSEY LS

88141057

**PRO**  
ALL MOUNTAIN  
BAGGY



SIZE 3XS-4XL

**MAIN FABRIC:** ELASTICATED BREATHABLE MATERIAL FULL PRINTABLE

**POCKETS:** 2 ON FRONT

**TECH:** ELASTICATED LUMBAR PANEL THAT WILL ADAPT TO YOUR MOVEMENTS IN AND OUT OF THE SADDLE  
SILICONE WAIST GRIPPER  
RATCHET CLOSURE WITH LOCKING TEETH  
CROTCH AREA WITH AN ABRASION-PROOF PANEL TO PROVIDE GREATER PROTECTION AGAINST SADDLE CHAFING  
REGULAR FIT



PRO ALL MOUNTAIN BAGGY

88201017

**PRO**  
ALL MOUNTAIN  
PANT



SIZE 3XS-4XL

**MAIN FABRIC:** ELASTICATED BREATHABLE MATERIAL FULL PRINTABLE

**POCKETS:** 2 ON FRONT

**TECH:** ELASTICATED LUMBAR PANEL THAT WILL ADAPT TO YOUR MOVEMENTS IN AND OUT OF THE SADDLE  
SILICONE WAIST GRIPPER  
RATCHET CLOSURE WITH LOCKING TEETH  
ELASTICATED LEG BOTTOM FOR A QUICK AND EASY FIT  
CROTCH AREA WITH AN ABRASION-PROOF PANEL TO PROVIDE GREATER PROTECTION AGAINST SADDLE CHAFING  
SLIM FIT



PRO ALL MOUNTAIN PANT

88201016



**PRO**  
 JERSEY  
 SHORT SLEEVES  
 MAN/WMN

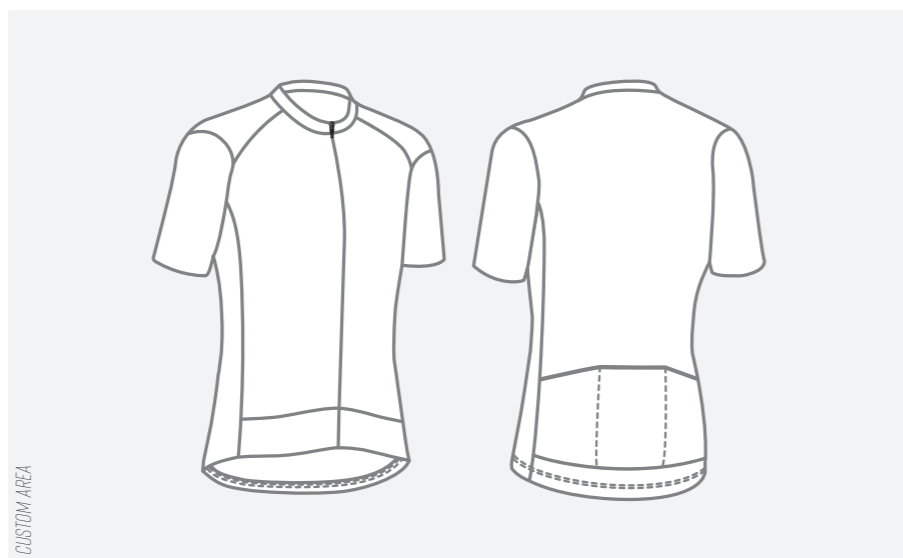


**PERFORMANCE**  
 JERSEY  
 SHORT SLEEVES



SIZE 3XS-4XL

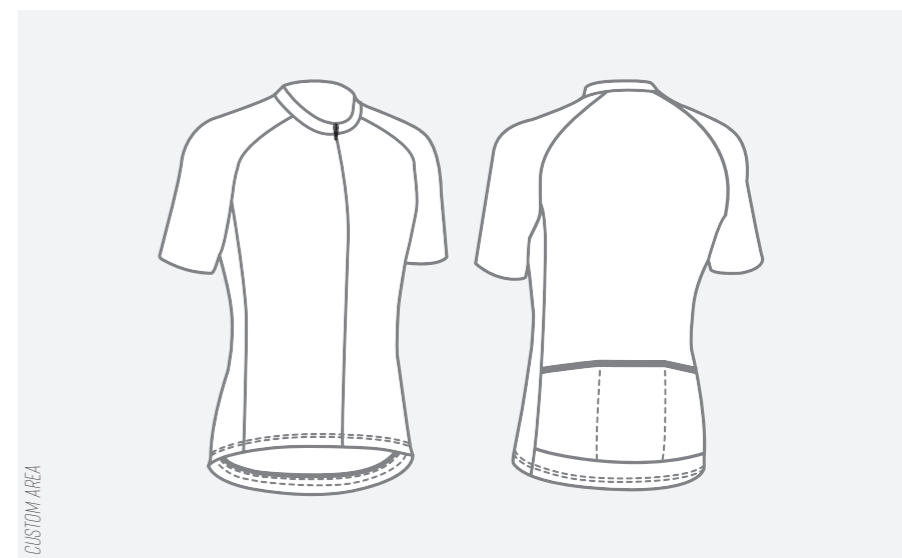
- MAIN FABRIC:** PIN UP 125GR  
 VENT INSERTS: STRIPED MATERIAL
- SLEEVES:** THINK 125GR
- ZIP:** FULL OPENING ZIP - S3 YKK
- POCKETS:** 3 ON BACK
- REFLEX INSERTS:** ON BACK
- BOTTOM ELASTIC:** ELASTIC 2.4 CM / 6 CM ON FRONT
- TECH:** COVERED ZIP CONSTRUCTION  
 RAW CUT WITH GRIP



FULL OPENING ZIP, FLATLOCK STITCHING	<b>88191033</b>
FULL OPENING ZIP	<b>88191035</b>
FULL OPENING ZIP WOMAN	<b>88141060</b>

SIZE 3XS-4XL

- MAIN FABRIC:** STRETCHY FABRIC WITH MICROSCOPIC  
 PORES  
 PROVIDES FIRST-RATE BREATHABILITY AND ELASTICITY, 130GR
- SLEEVES:** MICROFIBER LYCRA 140GR
- ZIP:** FULL OPENING ZIP - S3 YKK
- POCKETS:** 3 ON BACK
- REFLEX INSERTS:** ON BACK
- BOTTOM ELASTIC:** SILICON
- TECH:** COVERED ZIP CONSTRUCTION



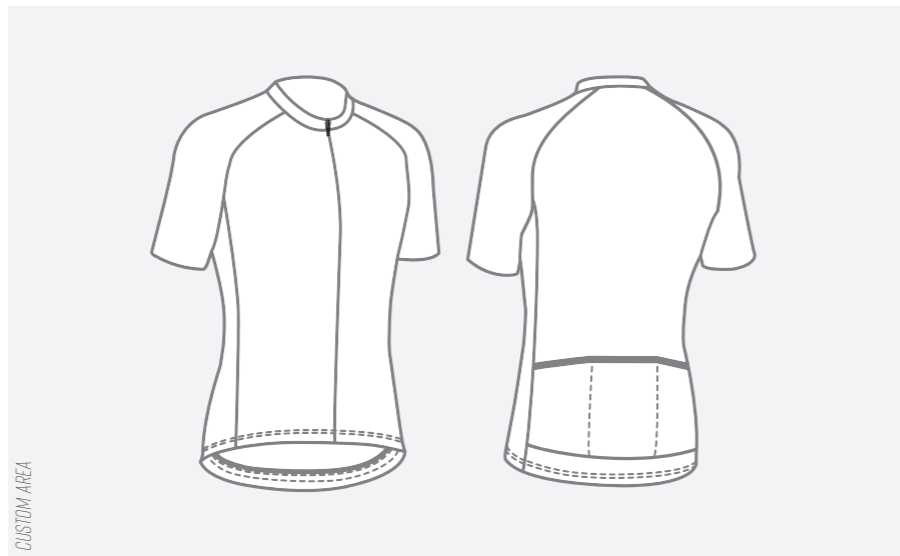
FULL OPENING ZIP, RAW CUT WITH GRIP SLEEVES	<b>88211017</b>
FULL OPENING ZIP, RAW CUT WITH GRIP SLEEVES, AND 4TH BACK ZIP POCKET	<b>88211017Z</b>
FULL OPENING ZIP, FOLDED AND STITCHED SLEEVES	<b>88211018</b>
FULL OPENING ZIP, FOLDED AND STITCHED SLEEVES AND 4TH BACK ZIP POCKET	<b>88211018Z</b>

**PERFORMANCE**  
AIR JERSEY  
SHORT SLEEVES



SIZE 3XS-4XL

- MAIN FABRIC:** AIR MESH 110GR
- SLEEVES:** MICROFIBER LYCRA 140GR
- ZIP:** FULL OPENING ZIP S3 YKK
- POCKETS:** 3 ON BACK
- REFLEX INSERTS:** ON BACK
- BOTTOM ELASTIC:** SILICON
- TECH:** COVERED ZIP CONSTRUCTION



FULL OPENING ZIP,  
RAW CUT WITH GRIP

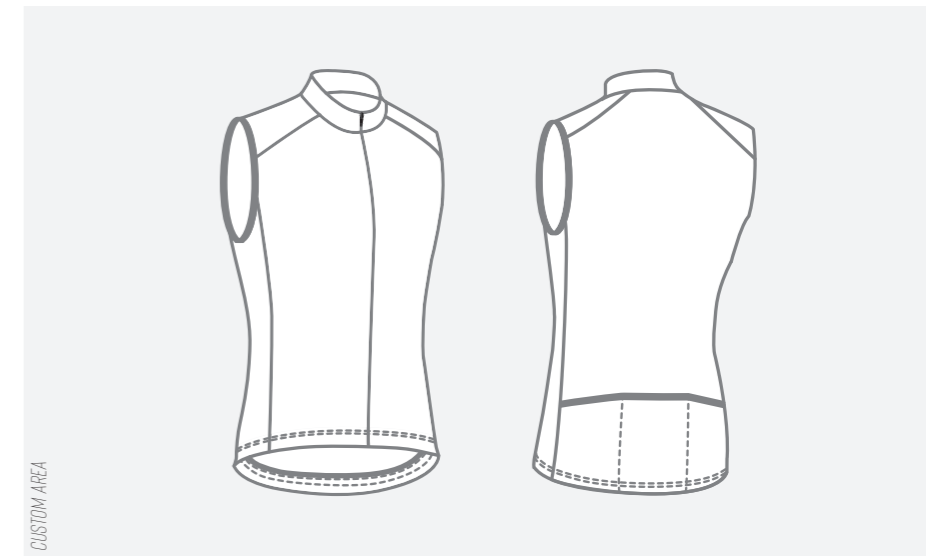
88211011

**PERFORMANCE**  
AIR JERSEY  
SLEEVELESS



SIZE 3XS-4XL

- MAIN FABRIC:** AIR MESH 110GR
- SHOULDER:** MICROFIBER LYCRA 140GR
- ZIP:** FULL OPENING ZIP S3 YKK
- POCKETS:** 3 ON BACK
- REFLEX INSERTS:** ON BACK
- BOTTOM ELASTIC:** SILICON
- TECH:** COVERED ZIP CONSTRUCTION



FULL OPENING ZIP

88211025



**SPORT**  
**JERSEY**  
**SHORT SLEEVES**



SIZE 3XS-4XL

**MAIN FABRIC:** LIGHTTECH 130GR

**SLEEVES:** LIGHTTECH 130GR

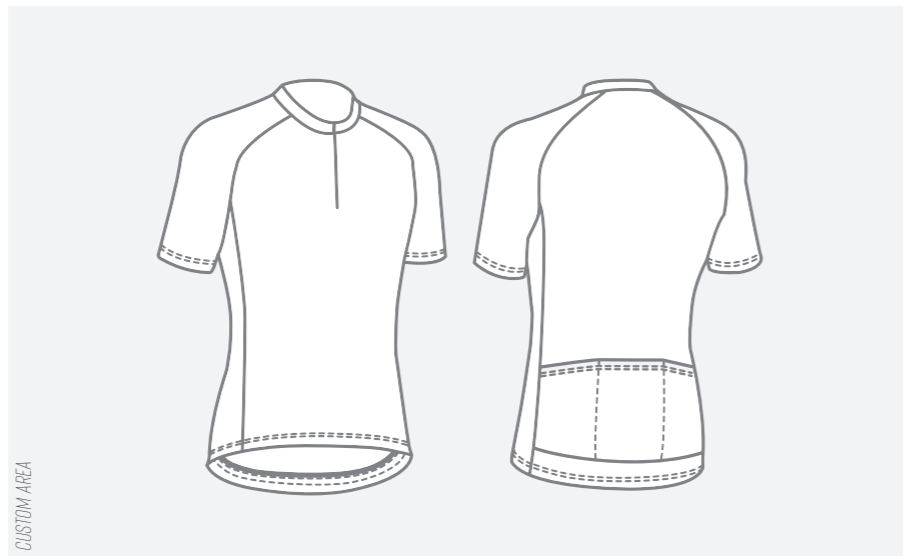
**CUFF:** FOLDED AND STITCHED

**ZIP:** FULL OPENING S3 YKK / INVISIBLE ZIP 40 CM

**POCKETS:** 3 ON BACK

**REFLEX INSERTS:** ON BACK

**BOTTOM ELASTIC:** SILICON



40 CM INVISIBLE ZIP;  
 FOLDED AND STITCHED SLEEVES

88191002

FULL OPENING ZIP;  
 FOLDED AND STITCHED SLEEVES

88191003





**PRO**  
BIBSHORT



SIZE 3XS-4XL

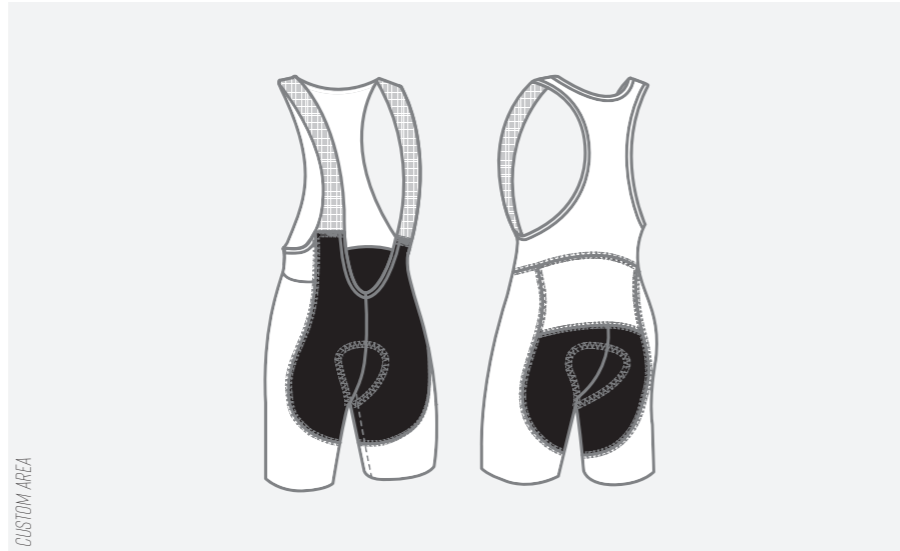
**PRINTABLE FABRIC:** SHIELD ENDURANCE WHITE 210GR

**NOT PRINTABLE FABRIC:** ZAFFIRO 210GR

**BIB:** SEAMLESS MESH WITH THERMOWELDED BORDER

**END LEG:** SEAMLESS, RAW CUT BORDER WITH BEEHIVE TEXTURED GRIPPER (4,5 CM) FITS LIKE A SECOND SKIN

**TECH:** FLATLOCK STITCHING, POSSIBLE CUSTOMIZATION ALL AROUND THE LEG



**FLAT STITCH PRO 2 - PADS:**

TREASURE AIR	88171061T
EXPLORER	88171061L
FREEDOM WMN	88171061W

**STANDARD STITCH PRO 3 - PADS:**

TREASURE AIR	88191037T
EXPLORER	88191037L
FREEDOM WMN	88191037W

**PERFORMANCE**  
BIBSHORT



SIZE 3XS-4XL

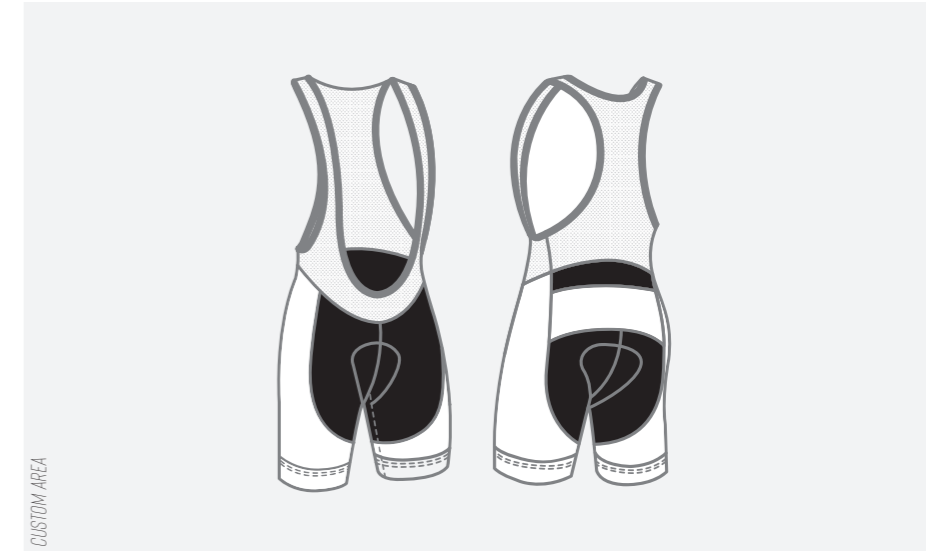
**PRINTABLE FABRIC:** SHIELD ENDURANCE WHITE 210GR

**NOT PRINTABLE FABRIC:** ATLANTA 225GR

**BIB:** MESH WITH BORDER TAPE

**END LEG:** ELASTIC 4,5CM WITH SILICON.

**TECH:** POSSIBLE BRANDING ALSO ON THE BACK SIDE AND CUSTOMIZATION ALL AROUND THE LEG



**PADS:**

TREASURE AIR	88161050T
FREEDOM MAN	88161050R
ADVENTURE GEL	88161050E
HAWKER AIR	88161050H
FREEDOM WMN	88161050W



**PERFORMANCE**  
SHORT



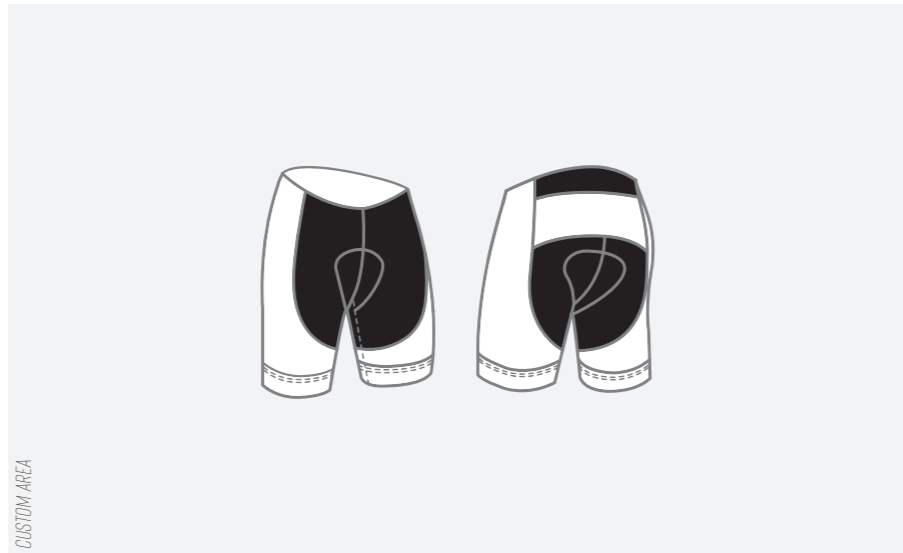
SIZE 3XS-4XL

**PRINTABLE FABRIC:** SHIELD ENDURANCE WHITE 210GR

**NOT PRINTABLE FABRIC:** ATLANTA 22SGR

**END LEG:** ELASTIC 4,5CM WITH SILICON.

**TECH:** POSSIBLE BRANDING ALSO ON THE BACK SIDE AND CUSTOMIZATION ALL AROUND THE LEG



CUSTOM AREA

**FLAT STITCH PRO 2 - PADS:**

FREEDOM MAN 88191045R

FREEDOM WMN 88191045W

**PERFORMANCE**  
BIBKNICKER



SIZE 3XS-4XL

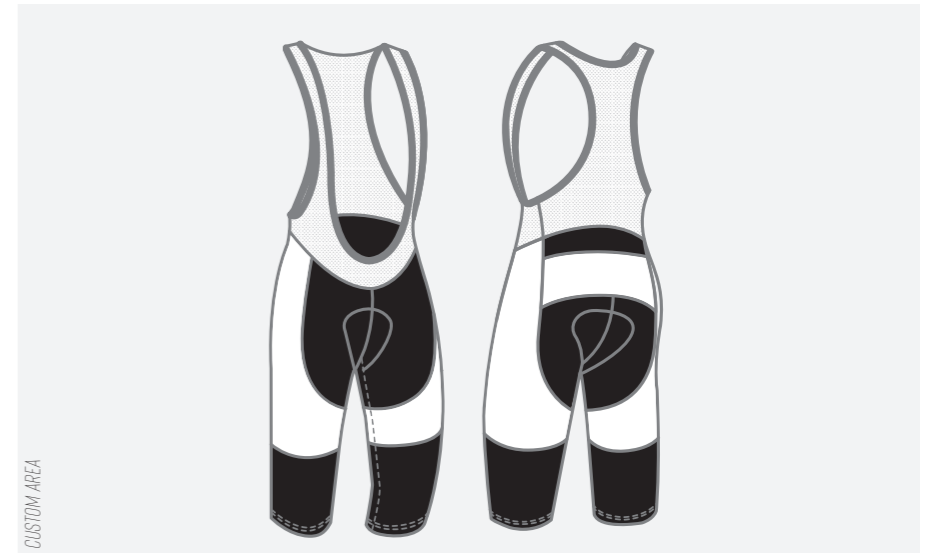
**PRINTABLE FABRIC:** SHIELD ENDURANCE WHITE 210GR

**NOT PRINTABLE FABRIC:** ATLANTA 22SGR

**BIB:** MESH WITH BORDER TAPE

**END LEG:** INNER ELASTIC WITH SILICON

**TECH:** POSSIBLE BRANDING ALSO ON THE BACK SIDE AND CUSTOMIZATION ALL AROUND THE LEG



CUSTOM AREA

**PADS:**

FREEDOM MAN 88191046R

FREEDOM WMN 88191046W

**PRO**  
 BODY CHRONO  
 LONG SLEEVES  
 MAN/WMN



SIZE 3XS-4XL

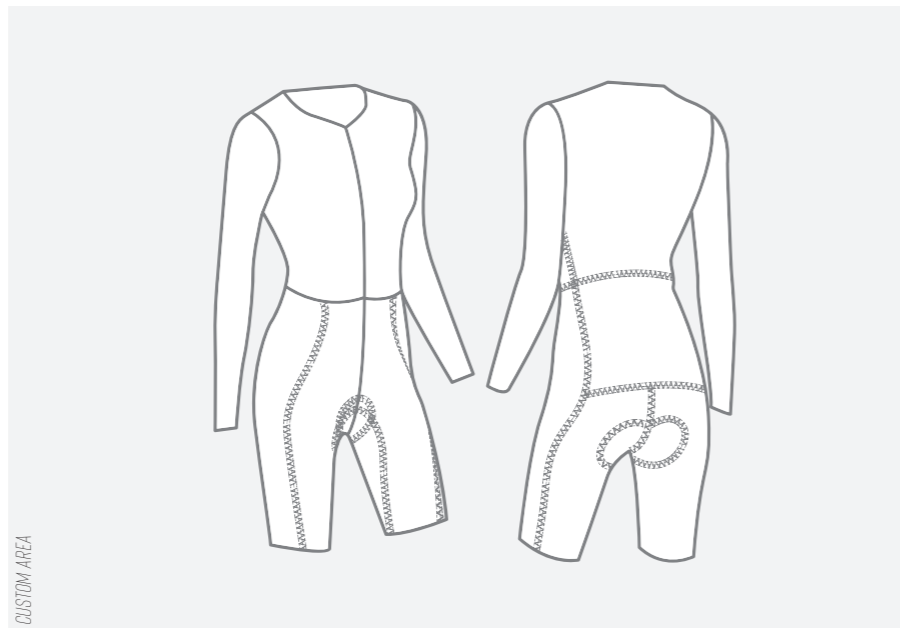
**PRINTABLE FABRIC:** AERO SKINLIGHT 210GR

**CUFF:** RAW CUT WITH GRIPPER

**ZIP:** INVISIBLE ZIP YKK

**END LEG:** RAW CUT

**NEK:** RAW CUT



**PADS:**

FREEDOM MAN 88141064R

FREEDOM WMN 88141064W

**PRO**  
 BODY RACE  
 SHORT SLEEVES



SIZE 3XS-4XL

**UPPER BODY FABRIC:** STRETCHY FABRIC WITH MICROSCOPIC PORES PROVIDES FIRST-RATE BREATHABILITY AND ELASTICITY. 130GR

**LOWER BODY FABRIC:** SHIELD ENDURANCE WHITE 210GR

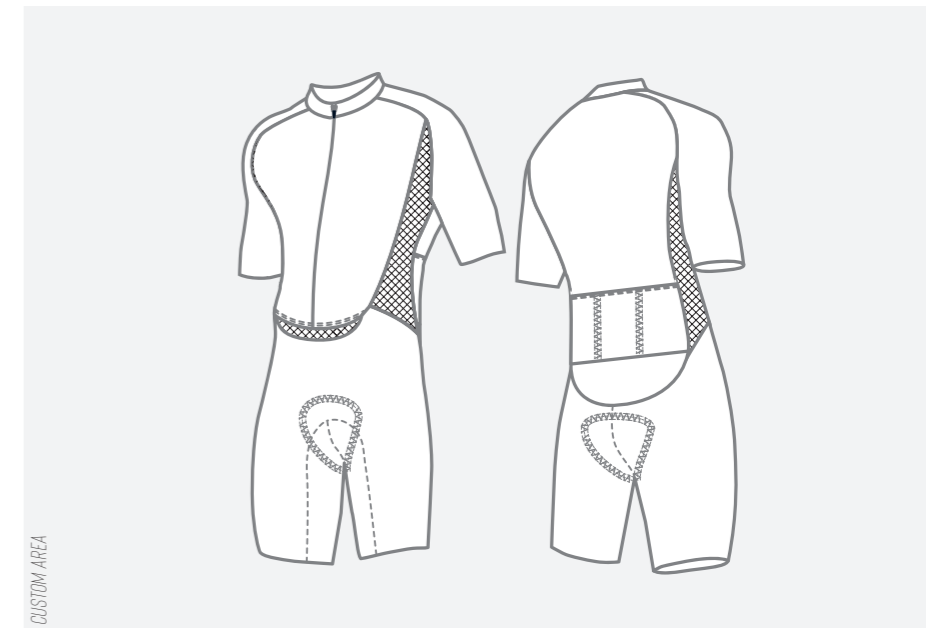
**CUFF:** RAW CUT WITH GRIP

**ZIP:** FULL OPENING ZIP YKK

**END LEG:** SEAMLESS, RAW CUT BORDER WITH SILICON GRIPPER (4,5 CM) FITS LIKE A SECOND SKIN

**POCKETS:** 3 BACK EXTERNAL POCKETS + 1 RADIO INNER POCKET

**TECH:** ONE PIECE ANATOMICAL PANT; FULL PRINT CUSTOMIZATION



**PADS:**

TREASURE AIR 88171062T

FREEDOM WMN 88171062W



**PRO**  
 TRIATHLON  
 LONG SLEEVES SUIT  
 MAN/WMN



SIZE 3XS-4XL

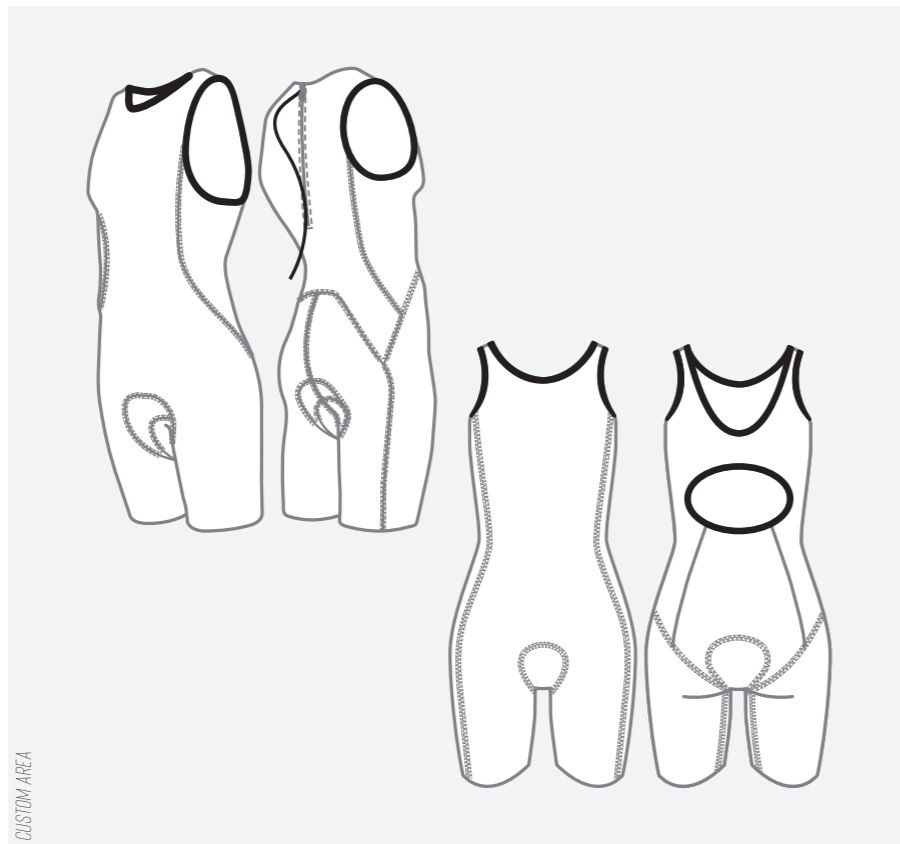
**PRINTABLE FABRIC:** SHIELD ENDURANCE WHITE 210GR

**ARMHOLE:** RAW CUT THERMOWELED BORDER WITH GRIPPER

**ZIP:** ON BACK

**END LEG:** RAW CUT BORDER WITH BONDED ELASTIC GRIP

**TECH:** FLATLOCK STITCHINGS



CUSTOM AREA

PRO TRIATHLON MAN SUIT 88141053TP

PRO TRIATHLON WMN SUIT 88141054TPW

**PRO**  
 TRIATHLON S  
 SHORT SLEEVES SUIT



SIZE 3XS-4XL

**UPPER BODY FABRIC:** STRETCHY FABRIC WITH MICROSCOPIC PORES PROVIDES FIRST-RATE BREATHABILITY AND ELASTICITY. 130GR

**LOWER BODY FABRIC:** SHIELD ENDURANCE WHITE 210GR

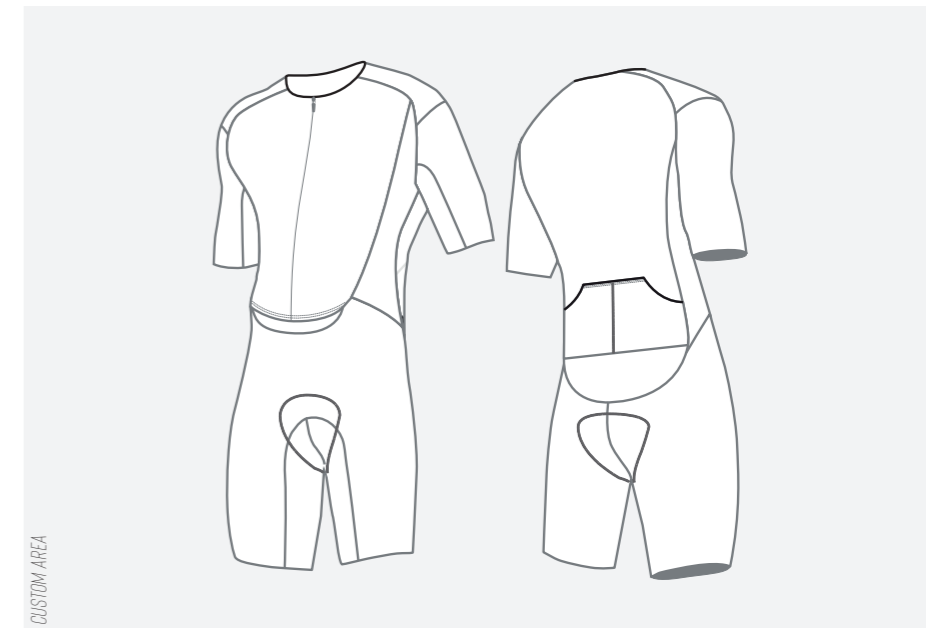
**CUFF:** RAW CUT WITH GRIP

**ZIP:** FULL OPENING ZIP YKK

**END LEG:** SEAMLESS, RAW CUT BORDER WITH DOTTED GRIPPER (4,5 CM) FITS LIKE A SECOND SKIN

**POCKETS:** 2 BACK EXTERNAL POCKETS

**TECH:** ONE PIECE ANATOMICAL PANT; FULL PRINT CUSTOMIZATION



CUSTOM AREA

**PADS:**

TRI PAD

88211012TP

**PRO**  
WINDPROOF LIGHT JACKET



SIZE 3XS-4XL

**MAIN FABRIC:** X-LITE® MEMBRANE TOTAL PROTECTION

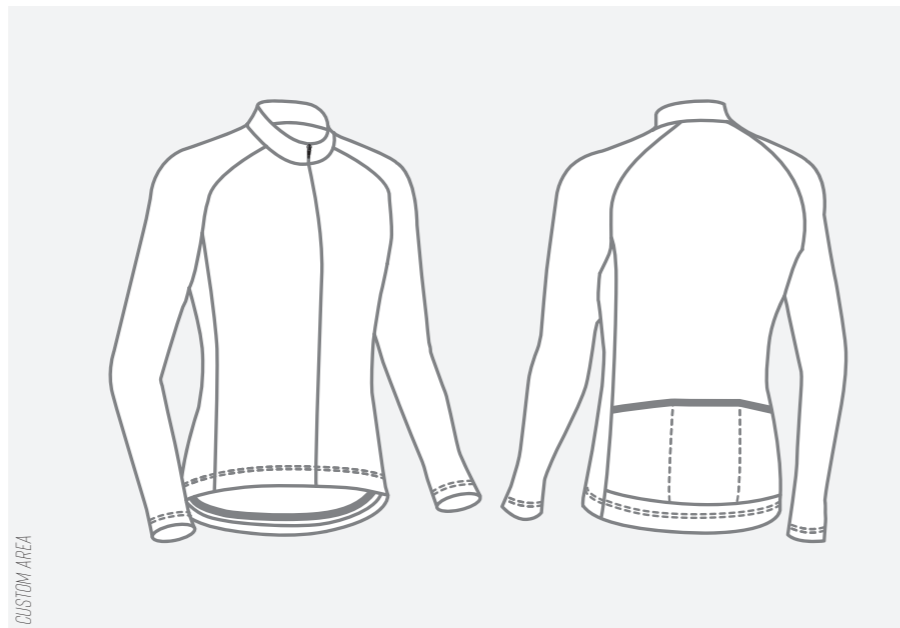
**ZIP:** FULL OPENING ZIP S3 YKK

**POCKETS:** 3 ON BACK

**REFLEX INSERTS:** ON BACK

**BOTTOM ELASTIC:** SILICON

**TECH:** COVERED ZIP CONSTRUCTION



PRO WINDPROOF LIGHT JACKET

88141029

**PERFORMANCE**  
WINDPROOF LIGHT JACKET



SIZE 3XS-4XL

**MAIN FABRIC:** 4 PRO MEMBRANE - SELECTIVE PROTECTION

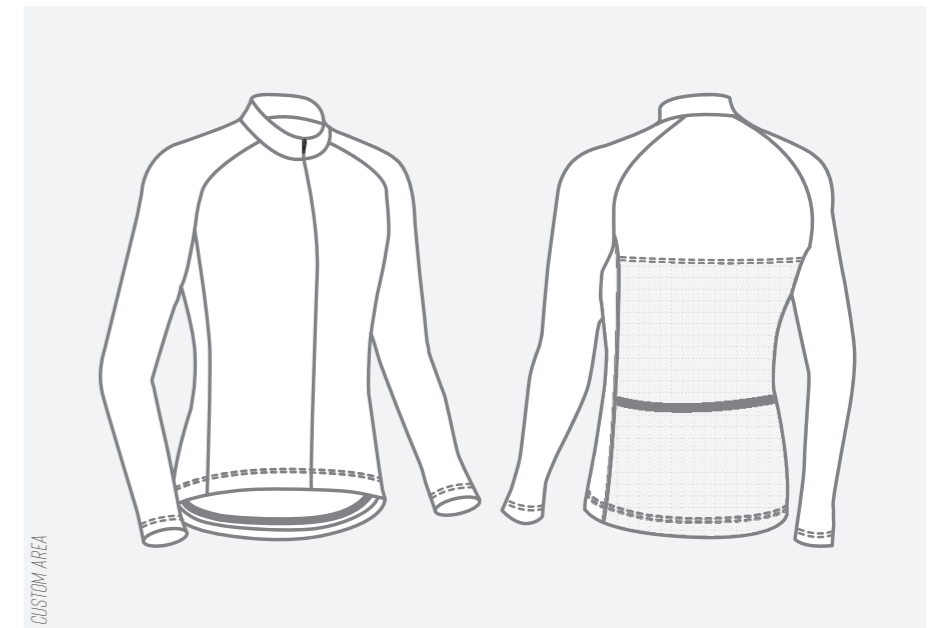
**BACK FABRIC:** MESH

**ZIP:** FULL OPENING ZIP S3 YKK

**REFLEX INSERTS:** ON BACK

**BOTTOM ELASTIC:** SILICON

**TECH:** COVERED ZIP CONSTRUCTION  
BACK WITH POCKET OPENING



PERF WINDPROOF LIGHT JACKET

88141042





**PRO**  
WINDPROOF LIGHT VEST



SIZE 3XS-4XL

**MAIN FABRIC:** X-LITE® MEMBRANE TOTAL PROTECTION

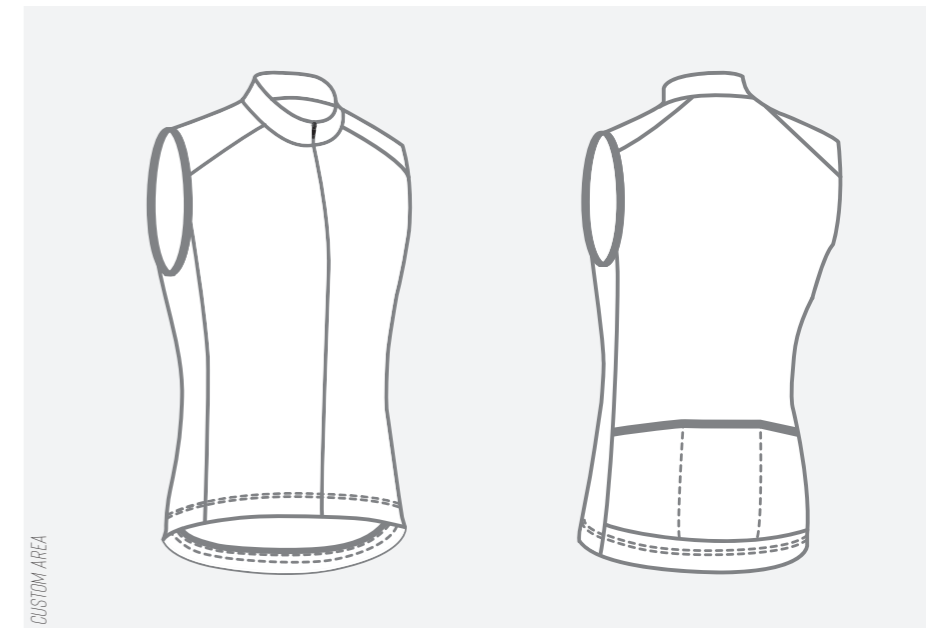
**ZIP:** FULL OPENING ZIP S3 YKK

**POCKETS:** 3 ON BACK

**REFLEX INSERTS:** ON BACK

**BOTTOM ELASTIC:** SILICON

**TECH:** COVERED ZIP CONSTRUCTION



PRO WINDPROOF LIGHT VEST

88141028

## PERFORMANCE

WINDPROOF LIGHT VEST  
SELECTIVE PROTECTION



SIZE 3XS-4XL

**MAIN FABRIC:** 4 PRO MEMBRANE - SELECTIVE PROTECTION

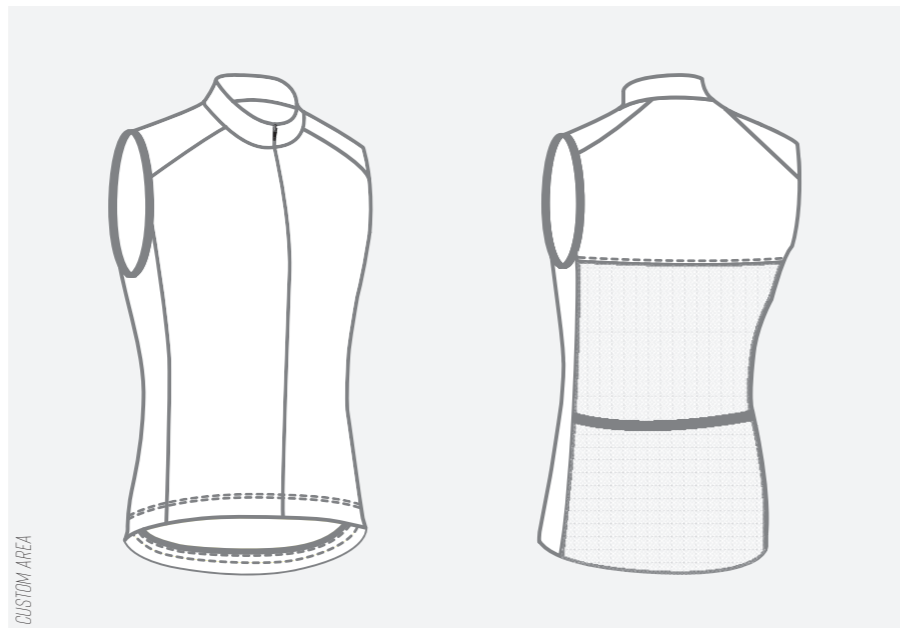
**BACK FABRIC:** MESH

**ZIP:** FULL OPENING ZIP S3 YKK

**REFLEX INSERTS:** ON BACK

**BOTTOM ELASTIC:** SILICON

**TECH:** COVERED ZIP CONSTRUCTION  
BACK WITH POCKET OPENING



PERF WINDPROOF LIGHT VEST

88141020

## PERFORMANCE

WINDPROOF LIGHT VEST  
TOTAL PROTECTION



SIZE 3XS-4XL

**MAIN FABRIC:** X-LITE® MEMBRANE TOTAL PROTECTION

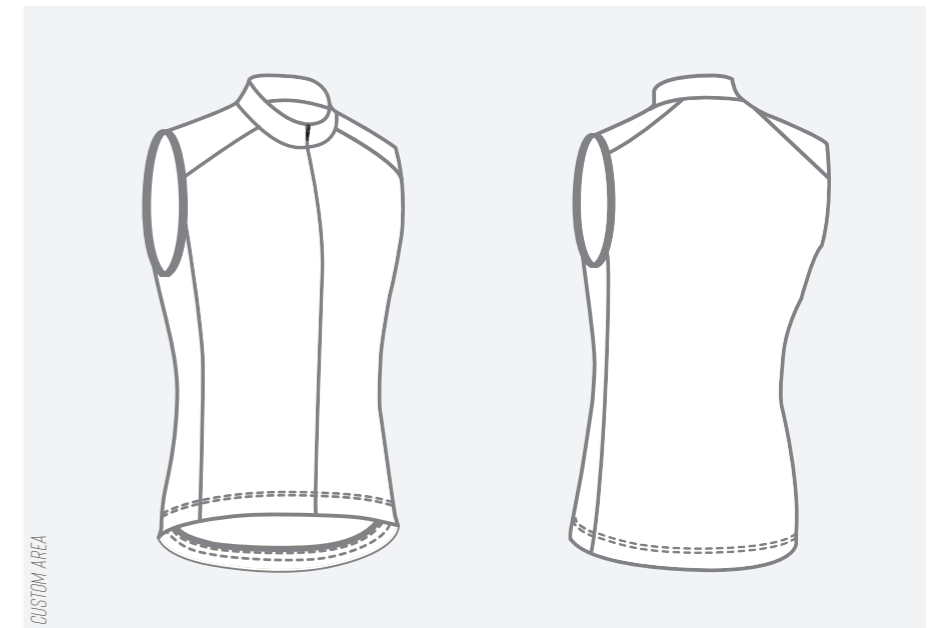
**ZIP:** FULL OPENING ZIP S3 YKK

**POCKETS:** 3 ON BACK

**REFLEX INSERTS:** ON BACK

**BOTTOM ELASTIC:** SILICON

**TECH:** COVERED ZIP CONSTRUCTION



PERF WINDPROOF LIGHT VEST

88141024



**PRO**  
WINTER JACKET



SIZE 3XS-4XL

**MAIN FABRIC:** HIGH THERMO STRETCH FABRIC WITH WATERPROOF MEMBRANE

**CUFF:** DOLOMITI

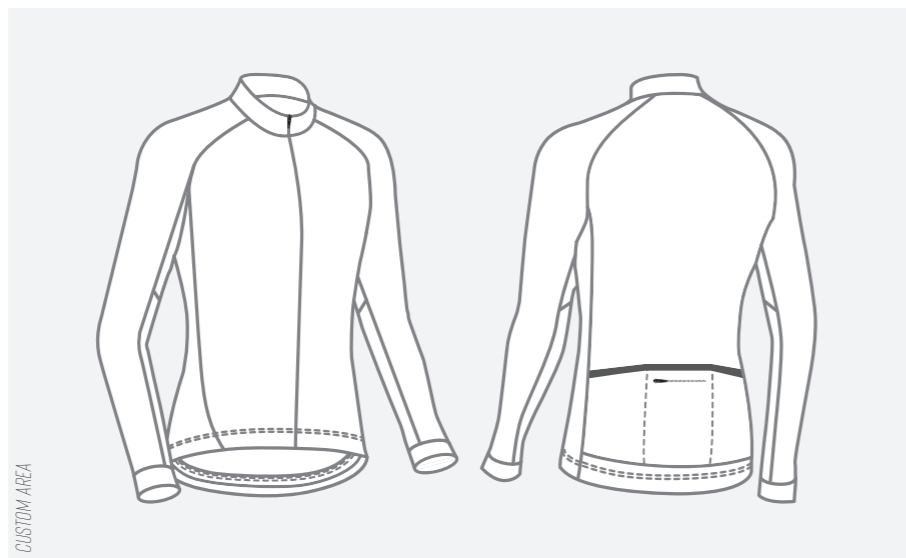
**ZIP:** FULL OPENING ZIP YKK

**POCKETS:** 3 ON BACK + 1 WITH ZIP

**REFLEX INSERTS:** ON BACK

**BOTTOM ELASTIC:** SILICON

**TECH:** COVERED ZIP CONSTRUCTION  
WATERPROOF MEMBRANE



PRO WINTER JACKET

88151010

**PERFORMANCE**  
WINTER CROSS JACKET



SIZE 3XS-4XL

**MAIN FABRIC:** THERMO MICRO SQUARED FABRIC WITH BREATHABLE MEMBRANE

**CUFF:** DOLOMITI

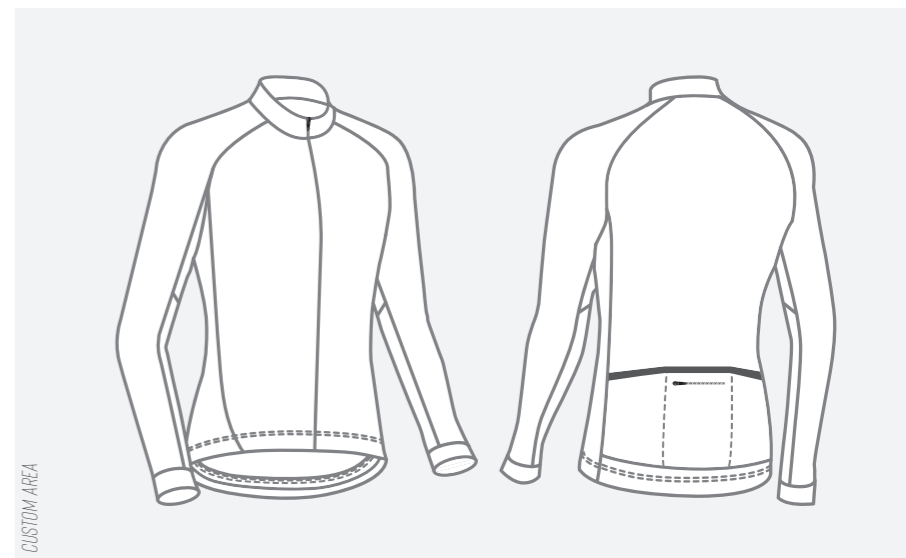
**ZIP:** FULL OPENING ZIP YKK

**POCKETS:** 3 ON BACK + 1 WITH ZIP

**REFLEX INSERTS:** ON BACK

**BOTTOM ELASTIC:** SILICON

**TECH:** COVERED ZIP CONSTRUCTION  
WATERPROOF MEMBRANE  
DWR TREATMENT



PERF WINTER CROSS JACKET

88201015

**PRO**  
LIGHT H2O WINTER  
SHORT SLEEVES



SIZE 3XS-4XL

**MAIN FABRIC:** PRINTABLE STRETCH LIGHTWEIGHT FABRIC WITH WATERPROOF MEMBRANE

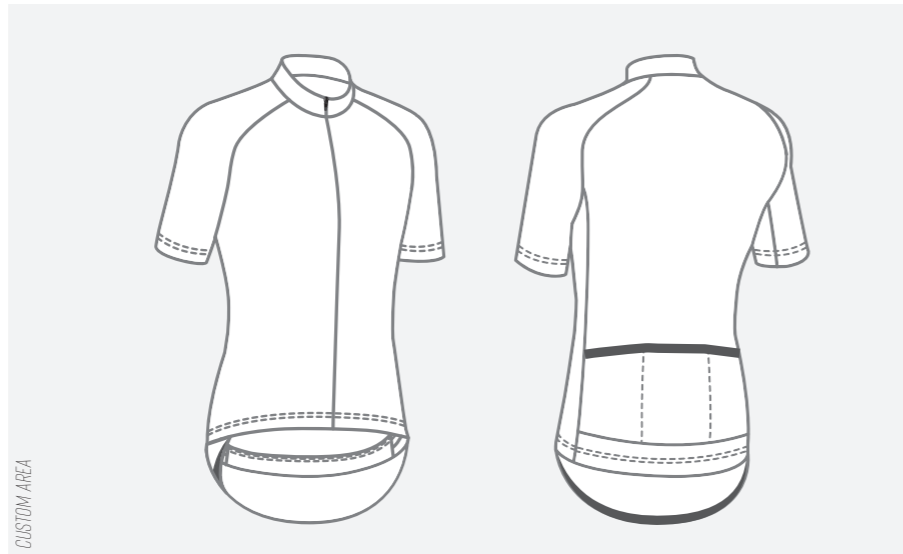
**ZIP:** FULL OPENING ZIP YKK

**POCKETS:** 3 ON BACK

**REFLEX INSERTS:** ON BACK

**BOTTOM ELASTIC:** SILICON

**TECH:** COVERED ZIP CONSTRUCTION  
WATERPROOF MEMBRANE  
4 WAY STRETCH



PRO LIGHT H2O SS

88151111

**PRO**  
LIGHT H2O WINTER  
LONG SLEEVES



SIZE 3XS-4XL

**MAIN FABRIC:** PRINTABLE STRETCH LIGHTWEIGHT FABRIC WITH WATERPROOF MEMBRANE

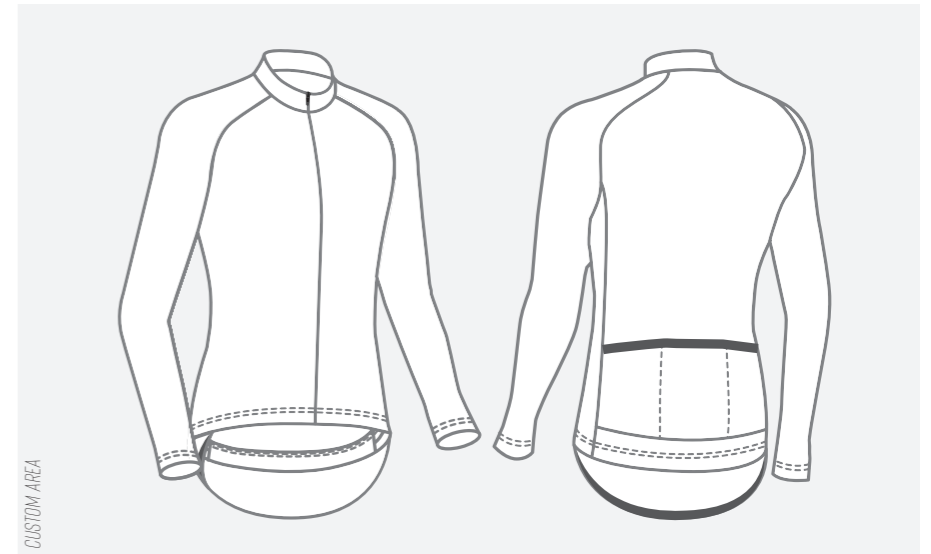
**ZIP:** FULL OPENING ZIP YKK

**POCKETS:** 3 ON BACK

**REFLEX INSERTS:** ON BACK

**BOTTOM ELASTIC:** SILICON

**TECH:** COVERED ZIP CONSTRUCTION  
WATERPROOF MEMBRANE  
4 WAY STRETCH



PRO LIGHT H2O LS

88151113



**PRO**  
WINTER JERSEY  
LONG SLEEVES



**PERFORMANCE**  
WINTER JERSEY  
LONG SLEEVES



SIZE 3XS-4XL

**MAIN FABRIC:** BIELASTIC POLYESTER THERMOPILE

**CUFF:** LYCRA BORDER (BLACK OR WHITE)

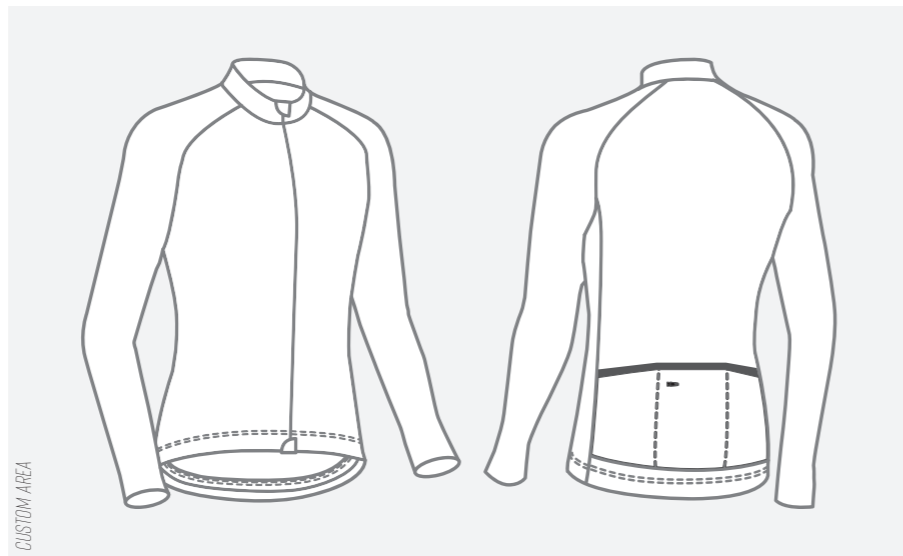
**ZIP:** FULL OPENING ZIP YKK

**POCKETS:** 3 ON BACK + 1 WITH ZIP

**REFLEX INSERTS:** ON BACK

**BOTTOM ELASTIC:** SILICON

**TECH:** COVERED ZIP CONSTRUCTION



PRO WINTER JERSEY LS

88151012

SIZE 3XS-4XL

**MAIN FABRIC:** POLYESTER THERMOPILE

**CUFF:** FOLDED AND STITCHED

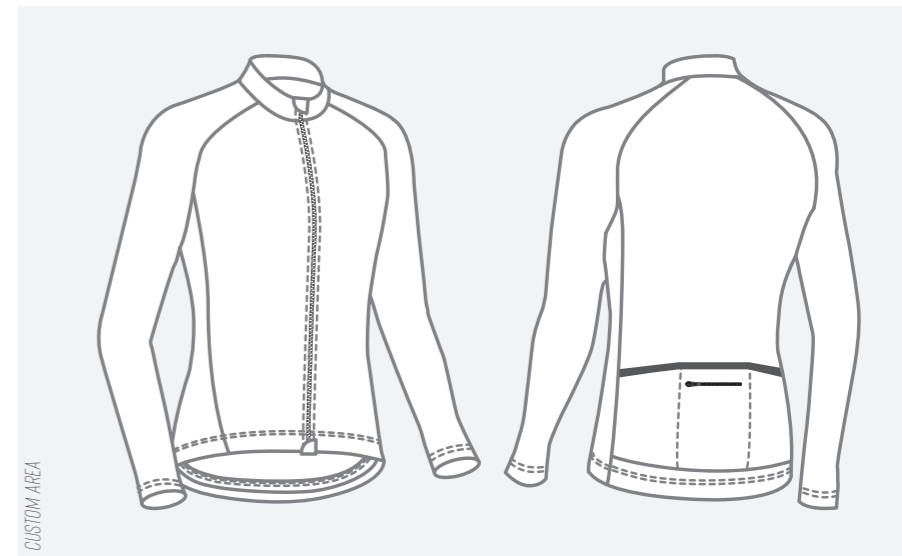
**ZIP:** FULL OPENING ZIP YKK

**POCKETS:** 3 ON BACK + 1 WITH ZIP

**REFLEX INSERTS:** ON BACK

**BOTTOM ELASTIC:** SILICON

**TECH:** COVERED ZIP CONSTRUCTION



PERF WINTER JERSEY LS

88171021

**PERFORMANCE**  
WINTER BIBSHORT



SIZE 3XS-4XL

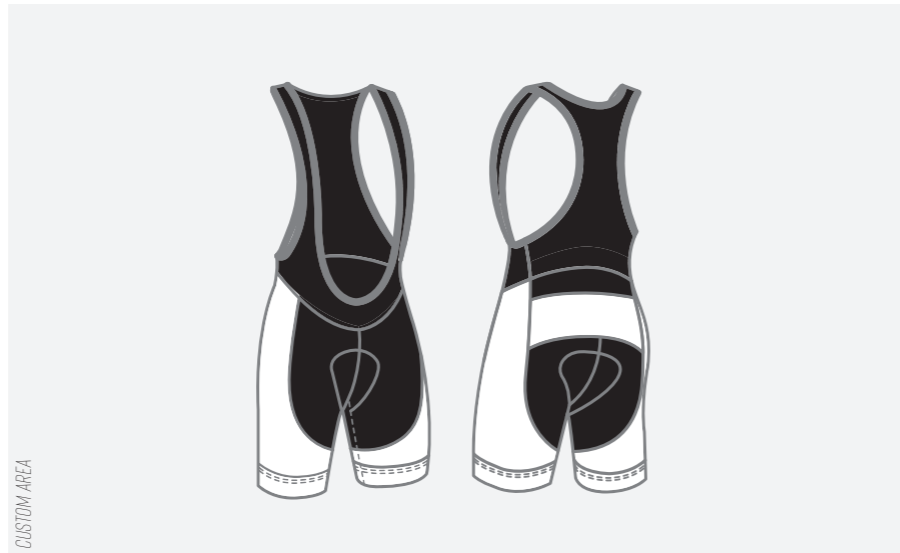
**PRINTABLE FABRIC:** DOLOMITI

**NOT PRINTABLE FABRIC:** VUELTA

**BIB:** VUELTA

**END LEG:** ELASTIC 4,5CM WITH SILICON.

**TECH:** POSSIBLE BRANDING ALSO ON THE BACK SIDE AND CUSTOMIZATION ALL AROUND THE LEG



**PADS:**

TREASURE AIR	88191030T
FREEDOM MAN	88191030R
FREEDOM WMN	88191030W

**PERFORMANCE**  
WINTER BIBKNICKER



SIZE 3XS-4XL

**PRINTABLE FABRIC:** DOLOMITI

**NOT PRINTABLE FABRIC:** VUELTA

**BIB:** VUELTA

**END LEG:** ELASTIC SILICON.

**TECH:** POSSIBLE BRANDING ALSO ON THE BACK SIDE AND CUSTOMIZATION ALL AROUND THE LEG



**PADS:**

TREASURE AIR	88191031T
FREEDOM MAN	88191031R
FREEDOM WMN	88191031W



**PERFORMANCE**  
WINTER BIBTIGHT



SIZE 3XS-4XL

**PRINTABLE FABRIC:** DOLOMITI

**NOT PRINTABLE FABRIC:** VUELTA

**BIB:** VUELTA

**END LEG:** ELASTIC SILICON.

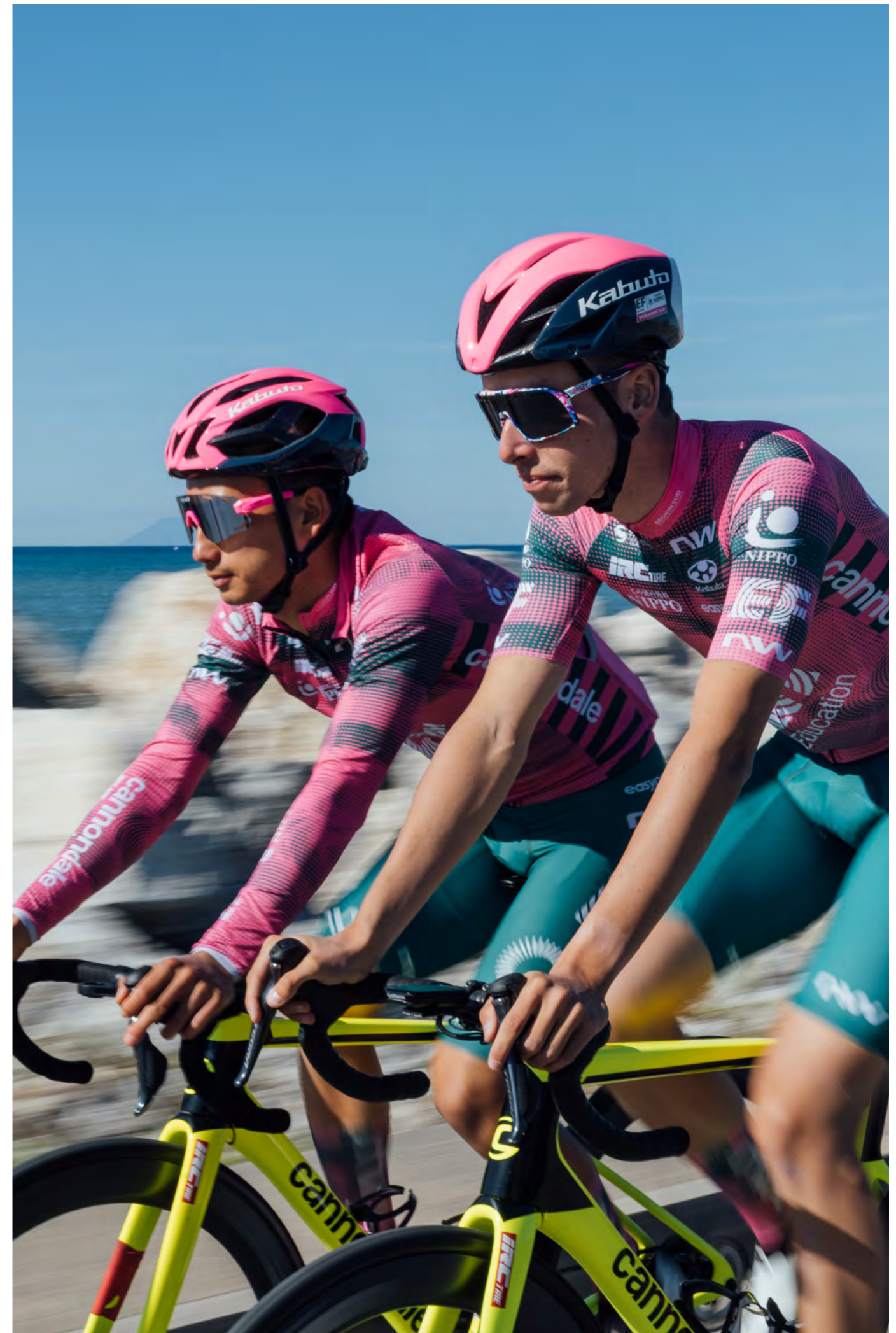
**TECH:** POSSIBLE BRANDING ALSO ON THE BACK SIDE AND CUSTOMIZATION ALL AROUND THE LEG



CUSTOM AREA

**PADS:**

TREASURE AIR	88191032T
FREEDOM MAN	88191032R
ADVENTURE GEL	88191032E
FREEDOM WMN	88191032W

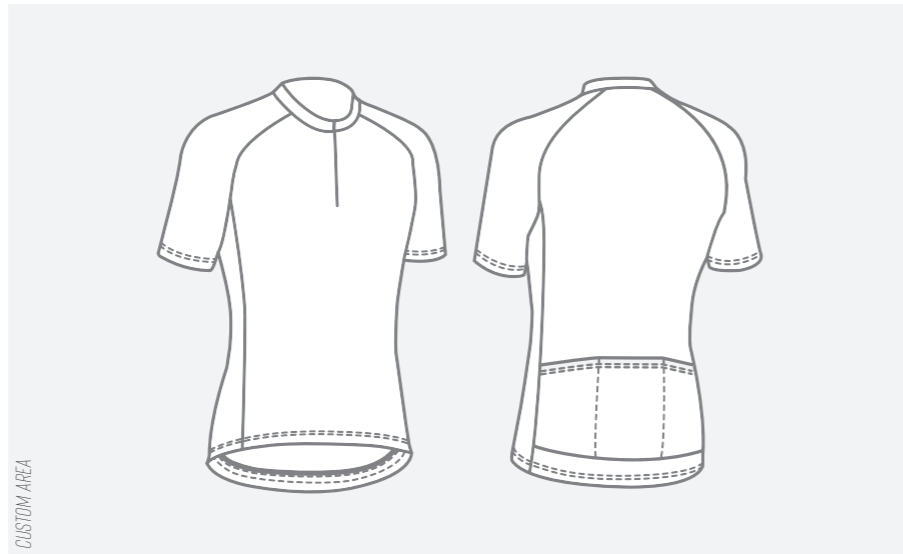


**KID SPORT**  
 JERSEY  
 SHORT SLEEVES



SIZE 3XS-4XL

- MAIN FABRIC:** LIGHTTECH 130GR
- SLEEVES:** LIGHTTECH 130GR
- CUFF:** FOLDED AND STITCHED
- ZIP:** ZIP 14 CM
- POCKETS:** 3 ON BACK
- REFLEX INSERTS:** ON BACK
- BOTTOM ELASTIC:** SILICON



KID SPORT JSY SS

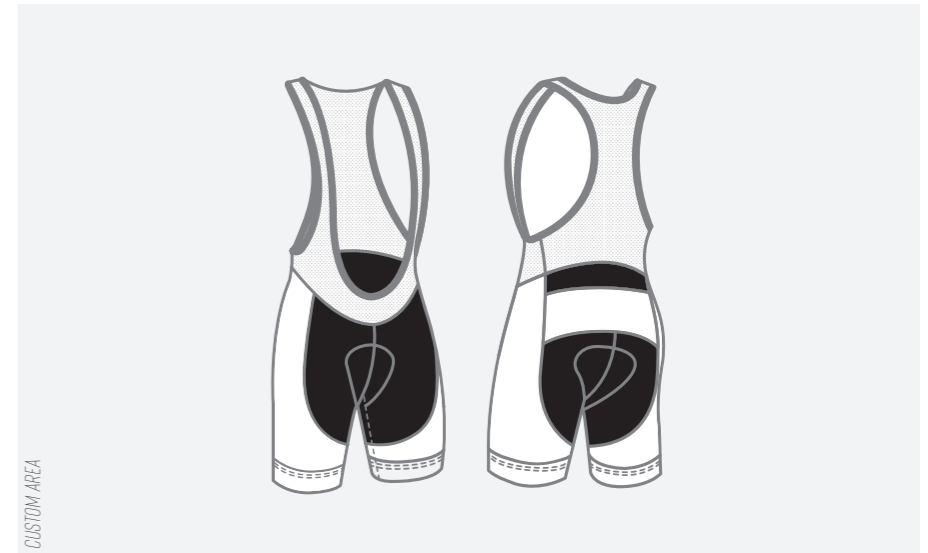
88191013

**KID PERFORMANCE**  
 BIBSHORT



SIZE 3XS-4XL

- PRINTABLE FABRIC:** SHIELD ENDURANCE WHITE 210GR
- NOT PRINTABLE FABRIC:** ATLANTA 225GR
- BIB:** MESH WITH BORDER TAPE
- END LEG:** ELASTIC 4,5CM WITH SILICON.
- TECH:** POSSIBLE BRANDING ALSO ON THE BACK SIDE AND CUSTOMIZATION ALL AROUND THE LEG



KID PERF SHORT

88191047

KID PERF BIBSHORT

88191048



**KID PERFORMANCE**  
ALL MOUNTAIN JERSEY  
SHORT SLEEVES



**KID PERFORMANCE**  
ALL MOUNTAIN JERSEY  
LONG SLEEVES

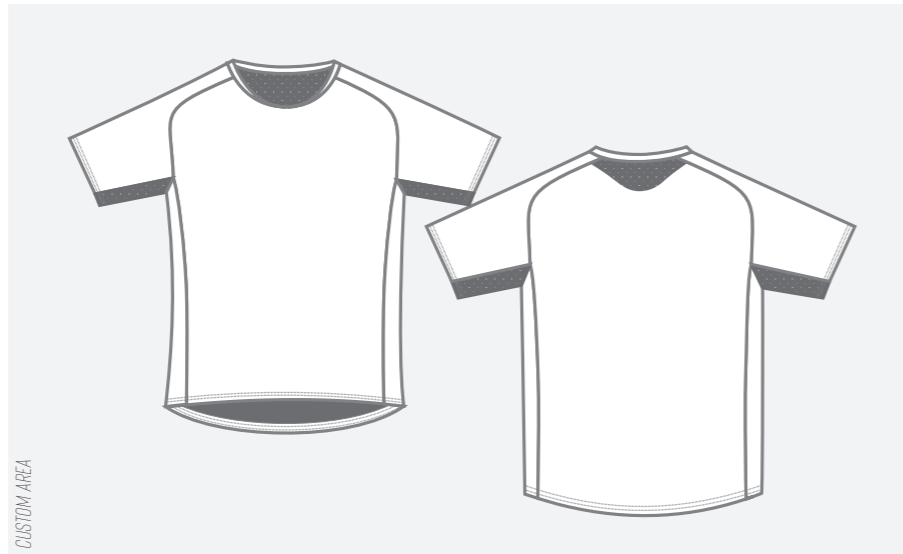


SIZE 3XS-4XL

**FRONT FABRIC:** FAST-DRYING 95 G MICROFIBER SUPPLE AND BREATHABLE

**INSERTS:** ELASTIC MESH

**TECH:** RAGLAN CUT SLEEVE WITH MESH INSERT ON ARMPIT FOR EXCELLENT MOISTURE MANAGEMENT, MESH INSERT ON THE BACK NECK FOR AIRFLOW SYSTEM CONTROL  
REGULAR FIT



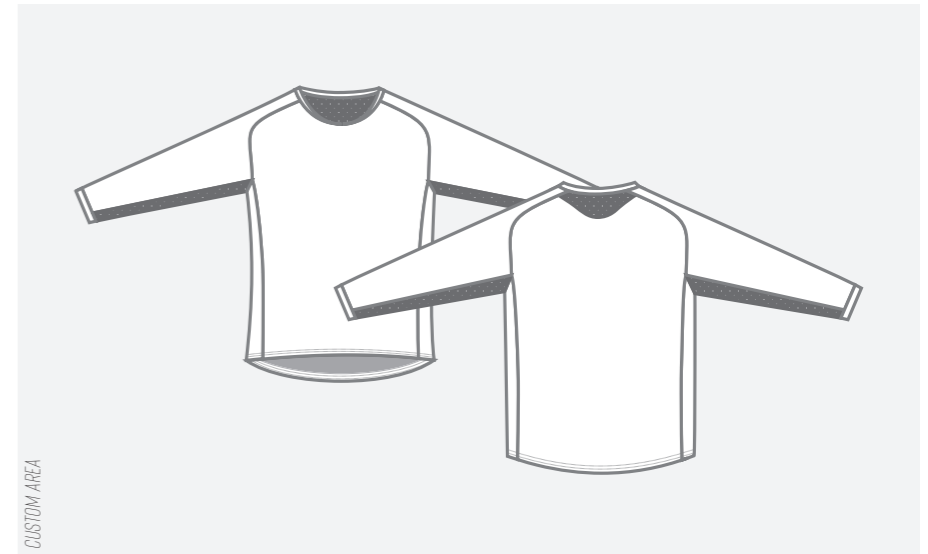
KID PERF ALL MOUNTAIN JERSEY SS **88191041**

SIZE 3XS-4XL

**FRONT FABRIC:** FAST-DRYING 95 G MICROFIBER SUPPLE AND BREATHABLE

**INSERTS:** ELASTIC MESH

**TECH:** RAGLAN CUT SLEEVE WITH MESH INSERT ON ARMPIT FOR EXCELLENT MOISTURE MANAGEMENT, MESH INSERT ON THE BACK NECK FOR AIRFLOW SYSTEM CONTROL  
REGULAR FIT



KID PERF ALL MOUNTAIN JERSEY LS **88191040**

**KID SPORT**  
WINTER JACKET



SIZE 3XS-4XL

**MAIN FABRIC:** THERMO MICRO SQUARED FABRIC WITH BREATHABLE MEMBRANE

**CUFF:** DOLOMITI

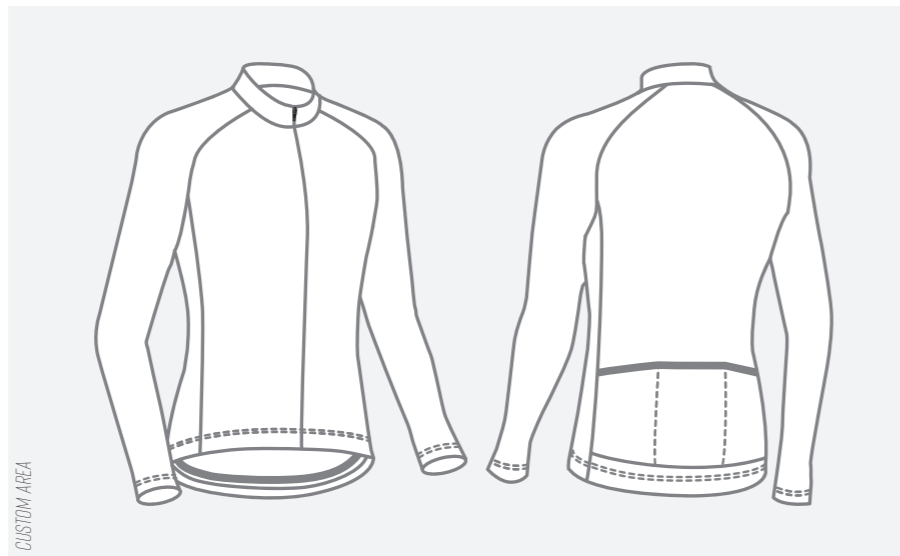
**ZIP:** FULL OPENING ZIP YKK

**POCKETS:** 3 ON BACK + 1 WITH ZIP

**REFLEX INSERTS:** ON BACK

**BOTTOM ELASTIC:** SILICON

**TECH:** COVERED ZIP CONSTRUCTION  
WATERPROOF MEMBRANE  
DWR TREATMENT



KID SPORT WINTER JACKET

88131076

**KID PERFORMANCE**  
WINTER BIBTIGHT



SIZE 3XS-4XL

**PRINTABLE FABRIC:** DOLOMITI

**NOT PRINTABLE FABRIC:** VUELTA

**BIB:** VUELTA

**END LEG:** ELASTIC SILICON

**TECH:** POSSIBLE BRANDING ALSO ON THE BACK SIDE AND  
CUSTOMIZATION ALL AROUND THE LEG



KID PERF WINTER BIBTIGHT

88191052



**AFTER RACE**  
HOODIE  
SWEATSHIRT



**AFTER RACE**  
JERSEY  
SHORT SLEEVES



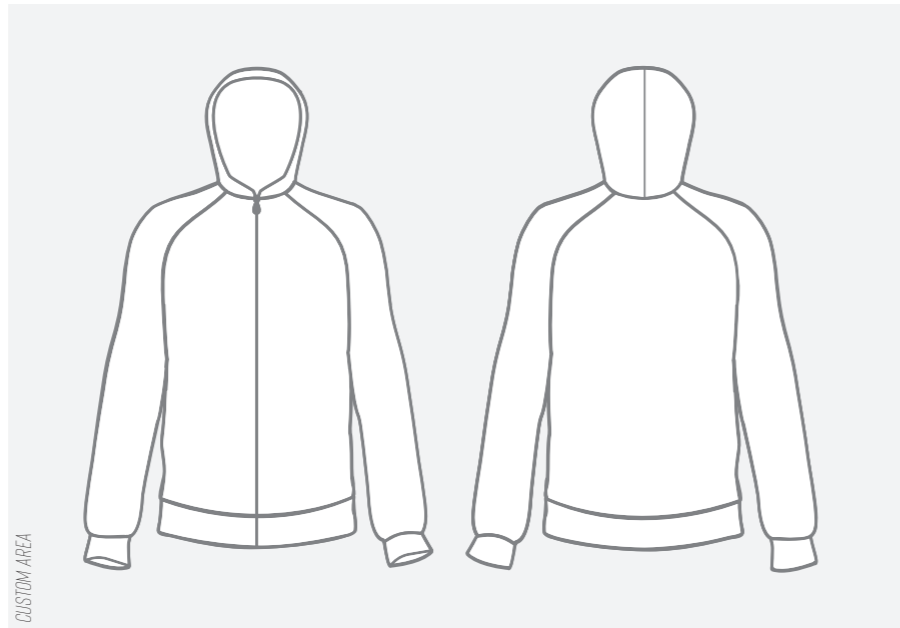
SIZE XS-4XL

**MAIN FABRIC:** POLYESTER FLEECE

**ZIP:** FULL OPENING ZIP YKK

**POCKETS:** 2 ON FRONT

**TECH:** FULL PRINT CUSTOMIZATION



CUSTOM AREA

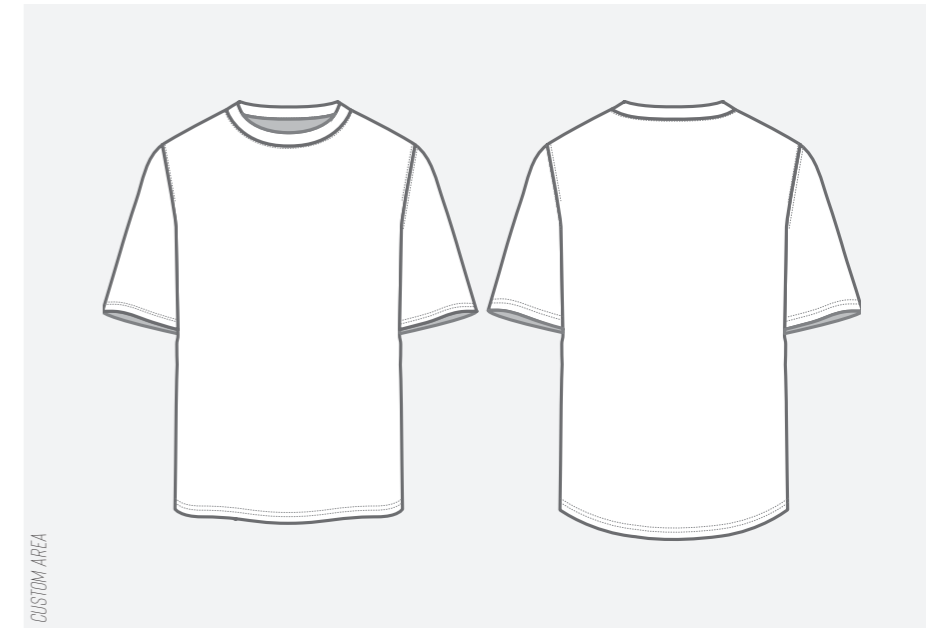
AFTER RACE HOODED SWEAT

88111012

SIZE 3XS-4XL

**MAIN FABRIC:** MICROFIBER POLYESTER

**TECH:** FULL PRINTING  
REGULAR FIT



CUSTOM AREA

AFTER RACE JERSEY SS

88201010

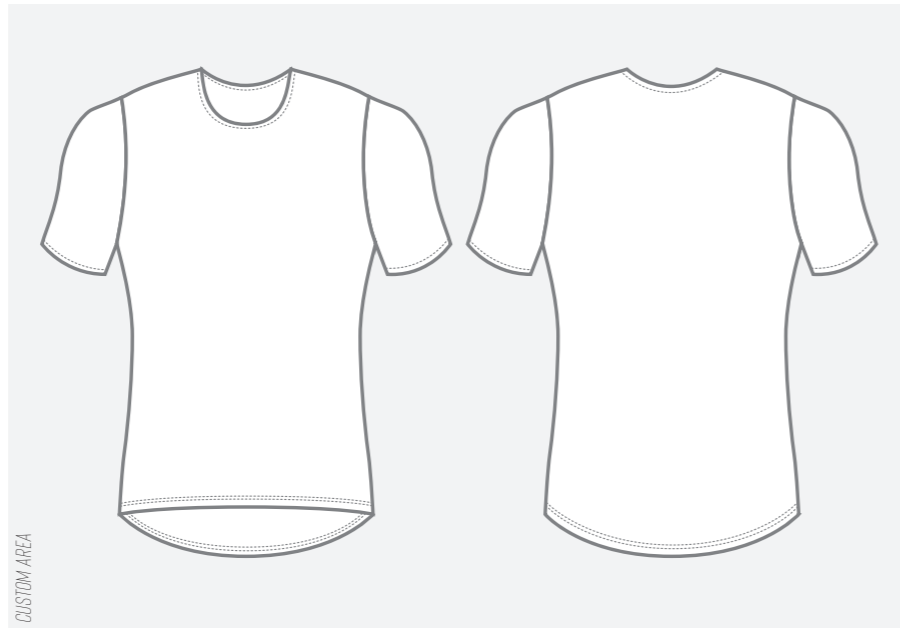
**BASE LAYER**  
SHORT SLEEVES



SIZE 3XS-4XL

**FABRIC:** ULTRALIGHT OPENWORK POLYESTER GRANTS SUPERIOR MOISTURE MANAGEMENT TO ENSURE LONG-LASTING FRESHNESS

**TECH:** FULL PRINT CUSTOMIZATION



BASELAYER SHORT SLEEVES

88201020

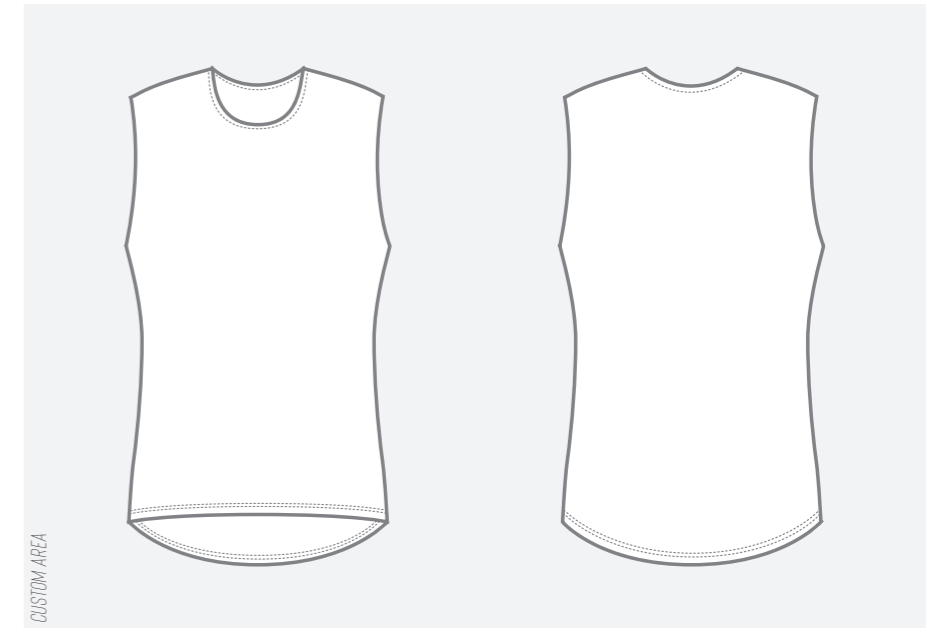
**BASE LAYER**  
SLEEVELESS



SIZE 3XS-4XL

**FABRIC:** ULTRALIGHT OPENWORK POLYESTER GRANTS SUPERIOR MOISTURE MANAGEMENT TO ENSURE LONG-LASTING FRESHNESS

**TECH:** FULL PRINT CUSTOMIZATION



BASELAYER SLEEVESLESS

88201021



**SPORT**  
SUMMER SOCKS



SIZE S-L

SPORT SUMMER SOCKS

C88142020

MAIN FABRIC: COOLMAX

HEIGHT: 14 CM

REINFORCEMENTS: TIP AND HEEL



**PERFORMANCE**  
WINTER SOCKS



SIZE S-L

PERFORMANCE WINTER SOCKS

C88222005

MAIN FABRIC: PRIMALOFT SILVER PERFORMANCE® AND MERINO WOOL

HEIGHT: 25 CM

REINFORCEMENTS: TOWELING SOLE



**PERFORMANCE**  
SUMMER SOCKS



SIZE S-L

PERFORMANCE SUMMER SOCKS

C88192009

MAIN FABRIC: Q-SKIN

HEIGHT: 16 CM

REINFORCEMENTS: TIP AND HEEL



**GLOVES**  
SHORT FINGERS



SIZE S-2XL

GLOVES SHORT FINGERS

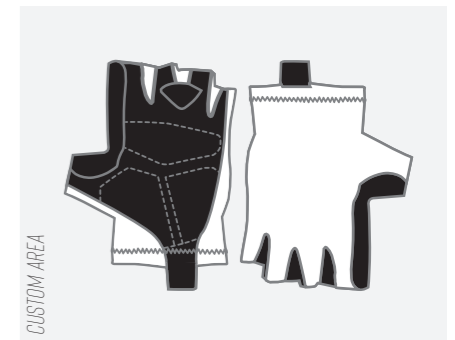
C88172010

MAIN FABRIC: PRINTABLE LYCRA

PALM: MICROFIBER AND SUPERDRY SPONGE

CUFF: MAIN CLIP FOR REMOVAL

TECH: SUPERIOR DESIGN FOR INCREDIBLE FIT



**ARM WARMER**  
SUMMER / WINTER



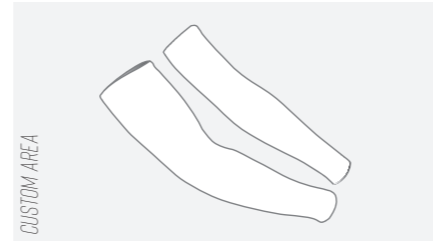
SIZE XXS/S - 2XL/3XL

ARM WARMER SUMMER **C88142010**

ARM WARMER WINTER **C88142012**

**MAIN FABRIC:**  
SUMMER: SHIELD ENDURANCE 210 GR  
WINTER: DOLOMITI

**TECH:** FULL CUSTOMIZABLE, SILICON BAND ON TOP



**RACE CAP**

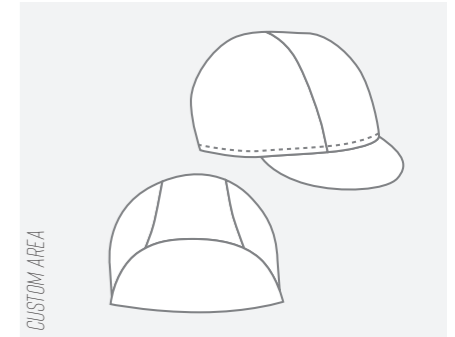


SIZE ONE

RACE CAP **C88202015**

**MAIN FABRIC:** COMFORT BREATHABLE POLIESTER AND ELASTIC MESH

**TECH:** FULL CUSTOMIZABLE, ULTRALIGHT



**ARM WARMER**  
WINTER



SIZE XXS/S - 2XL/3XL

ARM WARMER WINTER **C88142013**

**MAIN FABRIC:** DOLOMITI

**TECH:** FULL CUSTOMIZABLE, SILICON BAND ON TOP



**NECK WARMER**



SIZE ONE

GLOVES SHORT FINGERS **C88142021**

**MAIN FABRIC:** COMFORT BREATHABLE POLIESTER

**TECH:** FULL CUSTOMIZABLE

